



One Accent Color,  
One Accent Stripe,  
Lime & Aqua,  
Black Soutache

Cool-Silver,  
Clear Glass Beads,  
Ivory Braid

Two Accent Colors,  
Two Accent Stripes,  
Ivory, Brass, & Khaki-  
Bronze, Metallic  
Gold Soutache

Aqua

Orchid,  
C.O.M. Black Trim



Ivory

One Accent  
Color, Two  
Accent Stripes,  
Gold, Warm-Silver  
Metallic Soutache  
Wheat Braid

Ivory  
C.O.M.  
Beaded  
Trim

One Accent  
Color, One  
Accent Stripe,  
Black, Ivory  
Gold Non-Metallic  
Soutache, Gold  
Braid

Cool-Silver  
C.O.M. Trim

Two Accent  
Colors, Two  
Accent Stripes,  
Khaki-Bronze,  
Warm-Silver,  
Brass, Metallic  
Gold Soutache

One Accent  
Two Accent  
Stripes, Warm-  
Silver, Khaki-  
Bronze,  
Metallic Gold  
Soutache,  
Paprika Braid

## TABLE OF CONTENTS

The Metallic Collection .....	Page 1 - 2
Descriptive Line Drawing .....	Page 3
Order Form .....	Page 4
Price Worksheet .....	Page 5
Sample Shades .....	Page 6 -8
The Story Behind the Shades .....	Page 9
The Story Behind the Designer .....	Page 9
Hardware Accessories .....	Page 10
Shade Size Guideline .....	Page 10
Retail Price List .....	Page 11
Trade Discounts .....	Contact PLC Interiors

### NOTE:

Color scans of Craquele' and Trim samples can be found at the end of this catalog.

Actual samples can be ordered and rebated with first order ..... \$15.00

Full catalog binder and samples rebated with first order ..... \$25.00

## THE METALLIC COLLECTION

### The Debut Series

#### SHADES

Shades come in several shapes and sizes. Many not listed in this catalog are also available without an upcharge. Except for European glass beaded trims, all components are made in the USA. Inner lining comes in white or gold and are opaque. Light does not emit through shades but at the top and bottom only. Top and bottom edges are secured with black binding on shades with gold inner lining and white binding on shades with white inner lining. (Binding color may change without notice and due to supplier's change. Call if this is a concern.) Binding on the outside edges are partially or completely covered by decorative trim and. Binding on inside edges are completely visible. Sizes of shades are virtual.

#### MEDIA

All paints are metallic except black and ivory. Media used are LEED specified and non-hazardous. Over time, there is an unlikely chance that crazing (crackling) will minimally enlarge due to the heat of the light bulb and the nature of crazing in general.

#### FITTINGS

Standard fittings per shade are indicated in the price list but can be changed by request.

#### DECORATIVE TRIMS

Decorative trim is placed at the top and bottom edges of a shade and is required. Top and bottom trims need not be the same, e.g., the top trim could be a braid and the bottom a beaded trim. One trim can also be placed on top of another, e.g., a braid on top of a beaded trim. Beaded trims are allowed on bottom edge only.

#### SOUTACHES

A 1/8" soutache is required on shades with 1 or more stripes and placed where any two colors meet.

#### MULTIPLE COLORS

Choose one color for the main body and a complimentary color(s) for the top and/or bottom stripe(s). Stripes are approximately 3/4" - 1" but may be customized to any size.

#### CUSTOM OPTIONS

Several custom options are available. A quote will normally be given within 3 business days of receiving Order Forms A & B and your Descriptive Line Drawing. When customizing shades, do not submit a Price Worksheet until you receive quotes for those features.

**Size & Shape:** Several sizes and shapes not specified in this catalog are available with no up charge.

**Paint:** You may specify any non-metallic color from standard paint decks for an accent stripe. Other metallic colors are available by contacting PLC Interiors and may be used for both the body and accent stripe(s). Most colors will darken slightly during the process. A strike-off of a custom color is recommended as there are no returns or refunds.

**Decorative Trim:** You may supply your own decorative trim but a sample/memo must be sent for approval. In most cases, there is no upcharge to apply C.O.M. trims.

**Soutache:** Other colors are available by contacting PLC Interiors.

**Strikeoffs & Samples:** The color of a shade will be virtually the same as its strike-off or standard sample. However, the size, quantity, and shape of the crazing on each shade is uncontrollable and unpredictable.

## ARTISAN

Artisan shades, by definition, are handcrafted with individual characteristics imparted during the process. No two shades are identical. Sizes and shapes of crazing are unpredictable and uncontrollable. Slight imperfections are not considered flaws. Pin-size metallic or glaze particles may appear and are also not considered flaws.

## CARE

Bijoux shades are meant for indoor use only. Gently dust to clean. Do not use water or any cleaning agents.

## PLACING AN ORDER

Download and fill in Line Drawing, Order Form, and Price Worksheet (pages 3-5). Send with deposit to PLC Interiors at the P.O. Box below. Your order will be reviewed and acknowledged within 3 days. The balance, including packing & shipping charges, will be due prior to shipping.

If you are specifying any custom options, fax or email the Line Drawing and Order Form only. After you receive a quote for any custom option, you will be able to complete the Price Worksheet and send with a deposit.

If you do not receive an acknowledgement within 3 business days, please call or email to verify that your order has been received.

Your shades are made specifically for you. Lead time for most orders is approximately 6 - 8 weeks upon receipt of deposit. For shorter leads, call PLC Interiors.

## CHANGE ORDERS

Changes are permitted. The stage in production will determine whether an upcharge will be applied.

## RETURNS, REFUNDS, CANCELLATIONS, & EXCHANGES

None of the above are permitted once a deposit has been received.

## PACKING/SHIPPING

Shades will be shipped by UPS. Napa Valley and Marin orders may be hand-delivered. You will be notified of packing and shipping charges at the time the balance is due. Please clearly indicate the shipping information on Order Form A. You will be responsible for any additional freight charges due to incorrect address.

## FREIGHT DAMAGE, LOSS, SHORTAGE

All shades are carefully inspected before packing and shipping. Any mishap will have occurred during shipment. If you receive a damaged shade(s), **call PLC Interiors within 3 days (including weekends) of delivery**. If you ordered multiple shades, keep those that are not damaged. To receive a replacement shade(s) at no charge, repackage damaged shade(s) in **original packing materials and box(es) and include all bubble wrap, paper, and/or peanuts**. A Call Tag will be issued and the box(es) picked up by UPS. (UPS and PLC Interiors will not accept responsibility if it appears that damage could have occurred during the return shipment).

A replacement shade(s) will be made as quickly as possible.

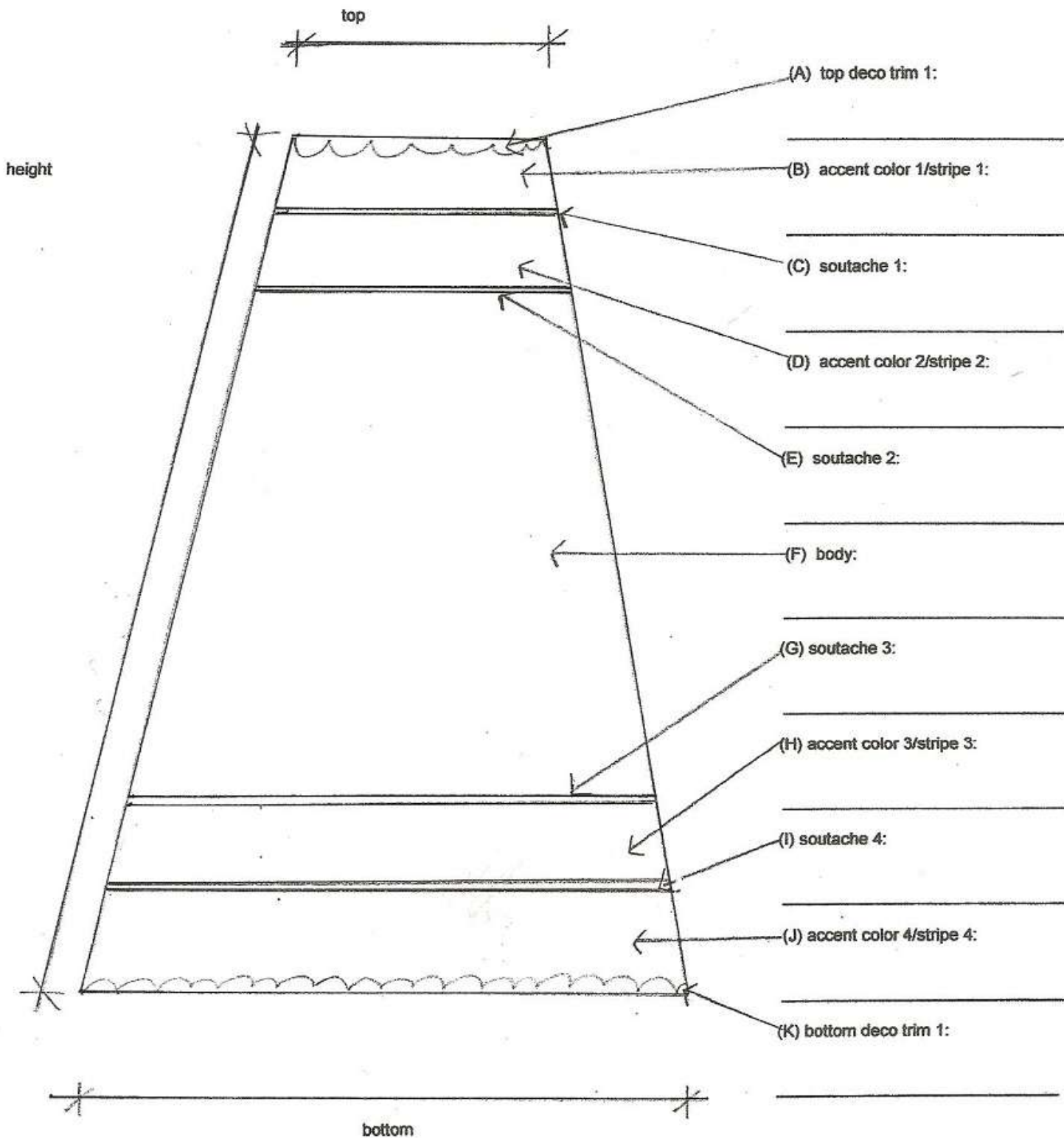
## CUSTOMER SERVICE

All questions welcomed. Call or email Patti Cowger.

# DESCRIPTIVE LINE DRAWING

Applies to all shapes. Measure top and bottom diameters on cones and drums.  
Measure width and lengths on squares and rectangles. Heights are measured on the slant.

Indicate colors and features and submit with Order Form



**ORDER FORM**

**SOLD TO** \_\_\_\_\_ **P.O. #** \_\_\_\_\_ **DATE** \_\_\_\_\_

**COMPANY NAME** \_\_\_\_\_ **RESALE PERMIT #** \_\_\_\_\_ (also fax or email copy of permit)

**STREET** \_\_\_\_\_

**CITY** \_\_\_\_\_ **STATE** \_\_\_\_\_ **ZIP** \_\_\_\_\_

**PHONE** \_\_\_\_\_ **FAX** \_\_\_\_\_ **EMAIL** \_\_\_\_\_

**SHIP TO (if different):** \_\_\_\_\_

**STREET:** \_\_\_\_\_

**CITY:** \_\_\_\_\_ **STATE** \_\_\_\_\_ **ZIP** \_\_\_\_\_

**PLEASE TELL US WHERE YOU LEARNED OF BIJOUX** \_\_\_\_\_

**QUANTITY:** \_\_\_\_\_ **DRUM** \_\_\_\_\_ **CONE** \_\_\_\_\_ **SQUARE/CUBE** \_\_\_\_\_ **HALF-SHADE** \_\_\_\_\_  
(For multiple shades with different designs, copy this order form).

1) **SIZE** top \_\_\_\_\_ x bottom \_\_\_\_\_ x slant/height \_\_\_\_\_

2) **INSIDE LINING** white \_\_\_\_\_ gold \_\_\_\_\_

3) **FITTING** washer \_\_\_\_\_ flame clip \_\_\_\_\_ bulb clip \_\_\_\_\_ other \_\_\_\_\_

4) **FILL IN LINE DRAWING ON PAGE 3**

5) **CUSTOM PAINT COLOR(S)** vendor and color \_\_\_\_\_  
request strikeoff of custom paint yes \_\_\_\_\_ no \_\_\_\_\_

6) **CUSTOM STRIPE SIZE** desired width \_\_\_\_\_

7) **CUSTOM TRIM** specify vendor, style, color \_\_\_\_\_  
(a memo/sample must be approved)

8) **CUSTOM SOUTACHE** color(s) \_\_\_\_\_

9) **CUSTOM DROP** total drop inches \_\_\_\_\_

**PRICE WORKSHEET**

(Fill in where applicable & submit with Order Form and Line Drawing. If customizing, do not submit until a quote as been issued)  
(For multiple shades with different designs or sizes, copy this form).

SHADE \$ \_\_\_\_\_

SOUTACHE \$ \_\_\_\_\_

GLASS BEAD TRIM \$ \_\_\_\_\_

BULB ADAPTOR + FINIAL \$ \_\_\_\_\_

HARP + FINIAL \$ \_\_\_\_\_ SIZE \_\_\_\_\_

CHANGE FITTING \$ \_\_\_\_\_

INCREASE DROP \$ \_\_\_\_\_

CUSTOM STRIPE WIDTH \$ \_\_\_\_\_

CUSTOM PAINT \$ \_\_\_\_\_

CUSTOM PAINT STRIKEOFF \$ \_\_\_\_\_

MULTIPLE COLORS/STRIPES \$ \_\_\_\_\_

**SUB-TOTAL** \$ \_\_\_\_\_

SALES TAX \$ \_\_\_\_\_ PLC Interiors will supply information.  
Not applicable if supplying resale permit.

**TOTAL** \$ \_\_\_\_\_

50% DEPOSIT \$ \_\_\_\_\_

**BALANCE** \$ \_\_\_\_\_

PACKING/SHIPPING \$ \_\_\_\_\_ PLC Interiors will supply information.

**DUE** \$ \_\_\_\_\_ Balance + packing/shipping will be due upon completion and prior to shipping.

**I agree to the description and terms of Page 1 and Page 2 entitled "The Metallic Collection".**

\_\_\_\_\_  
**Your Signature**

\_\_\_\_\_  
**Date**

**SHADES IN VARIOUS STAGES BEFORE ILLUMINATING THEIR FINAL DESTINATIONS**



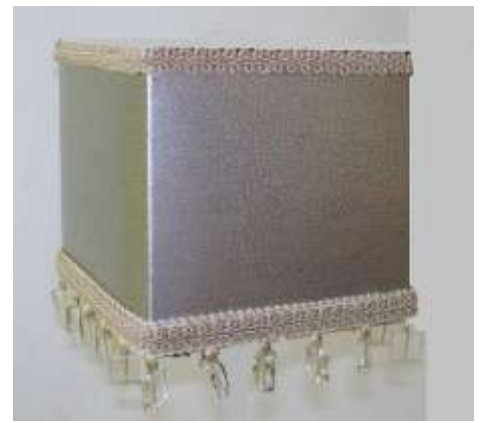
3 x 5 x 4 Chandelier  
Aqua, Metallic Silver Soutache, Seagrass Braid

8 x 8 x 7 Drum  
Cool-Silver, Black Braid, Black Glass-Beaded Trim

A shade can adapt to any design style - Contemporary, Traditional, Transitional, and more. Shape, decorative trim, and even color combination are the most determining factors. Drums, squares, and rectangles lean contemporary while cones are more traditional. Add beaded trim to a drum or a simple soutache to a cone, and they both become transitional.

Cubes, Squares, Rectangles, and Drums lead the current trend.

A clearer representation of shades may be seen by enlarging photos on my website. My sales representative or I would also be happy to meet with you in person or give you locations where they are on display.



5 x 5 x 5 Cube, Cool-Silver, Ivory Braid  
Ivory Glass Beaded Trim



5 x 5 x 5 Cube, Black, Black C.O.M. Trim,  
Metallic Silver Soutache, Black Glass  
Beaded Trim

4 x 4, 10 x 10, 8 Square, One Accent Color, Cool-Silver, Aqua,  
Metallic Silver Soutache



4 x 8, 5 x 9, 8 Rectangle, Two Accent  
Colors, Gold, Warm-Silver, Brass,  
Metallic Gold Soutache, Wheat Braid



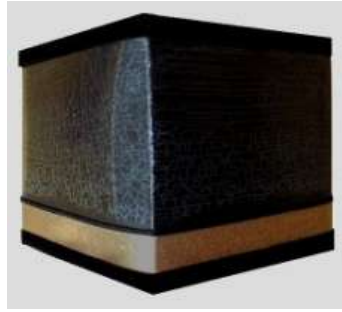
5 x 12 x 9 Cone, Two Accent Colors,  
Cool-Silver, Ivory, Warm-Silver,  
Metallic Silver Soutache, Ivory Braid



8 x 8 x 7 Drum, Cool-Silver,  
C.O.M. Black Cord, Metallic  
Silver Soutache



5 x 5 x 5 Cube, Two Accent Colors, Two Accent Stripes, Khaki-Bronze, Warm-Silver, Brass, Metallic Gold Soutache, Gold Braid



5 x 5 x 5 Cube, One Accent Color, One Accent Stripe, Black, Gold, Black Soutache, C.O.M. Black Velvet Trim



5 x 5 x 5 Cube, Two Accent Colors, Two Accent Stripes, Cool-Silver, Lime, Aqua, Metallic Silver Soutache, Seagrass Braid



8 x 8 x 7 Drum, One Accent Color, One Accent Stripe, Lime, Aqua, Black Soutache, Black Braid



8 x 8 x 7 Drum, One Accent Color, One Accent Stripe, Black, Ivory, Non-Metallic Gold, Gold Braid



6 x 6 x 7 Drum  
Aqua, Seagrass Braid



5 x 12 x 9 Cone  
Black, Metallic Gold Soutache, Black Braid



4 x 9 x 7 Cone, One Accent Color, One Stripe, Khaki-Bronze, Brass, Metallic Gold Soutache, Gold Braid



3 x 7 x 5 Chandelier  
One Accent Color, One Accent Stripe, Gold, Cool-Silver, Metallic Gold Soutache, Champagne Braid



8 x 8 x 7 Drum  
Ivory, Black Braid, Black Glass Bead Trim



8 x 8 x 7 Drum, One Accent Color  
Lime, Aqua, Black Soutache, Seagrass Braid



8 x 8 x 7 Drum, Ivory, Ivory Braid, C.O.M. Metal Bead Trim  
**(ivory now available as accent stripe(s) or chandelier only)**

## THE STORY BEHIND THE SHADES

### WHY

After years of searching for unique lampshades for clients, I decided to take matters into my own hands, literally, and develop my own line.

### HOW



Each shade is handcrafted through an 8-step metallic paint and glaze process that results in a pattern known in French as “craquele”. The jewel-like quality of the metallic was the inspiration for continuing the French theme with the name, “Bijoux”.



All components of a shade, except for European glass beaded trim, are made in the USA. All media are also LEED specified and non-toxic.

## CUSTOM OPTIONS

Several standard and custom options are available. Shape, size, and color can be specified to pair with any lamp base as well as coordinate with design elements in your room.

## DESIGN STYLES

Bijoux shades can adapt to any design style – contemporary, traditional, transitional, and more.

## DESIGN YOUR OWN SHADE

I will help you! Call or email me.



## HARDWARE ACCESSORIES



**W** = Washer Fitter, 1/2" drop



**F** = Flame Clip Fitter, 1/2" drop



**B** = Bulb Clip Fitter, 1/2" drop



Brass-plated finials come with bulb clip fitters and harps but may be replaced with your own.



Bulb Adaptor converts a washer to a bulb clip fitter.



Brass-plated heavy duty harps come in 6", 8", 10", 11".

### GENERAL SHADE SIZE RULE:

The bottom diameter of the shade should be 4" - 9" wider than the widest part of the base. The height of the shade should be approximately 2/3 the height of the base, i.e., from the bottom of the base to the socket, not including the socket.

Keep in mind that there are exceptions to every rule. The style and shape of your pairing should also be part of your decision.

G R A D E	SIZE/FITTING/SHAPE	BASE PRICE	SOUTACHE	ACCENT COLORS	BEADED TRIM
		Includes top & bottom 3/8" decorative trim.	Multiply # of soutache rows by:	(Add # of accent colors to # of accent stripes) then multiply by:	Bottom only.
A *	3 x 5 x 4-f cone	\$45	\$10	\$15	\$35
A *	3 x 7 x 5-f cone	\$45	\$10	\$15	\$35
A *	4 x 6 x 5-b cone	\$45	\$10	\$15	\$35
B	5 x 5 x 5-w cube	\$75	\$15	\$15	\$40
B	6 x 6 x 7-w drum	\$75	\$15	\$15	\$40
B	4 x 9 x 7-w cone	\$75	\$15	\$15	\$40
B	5 x 9 x 7-b cone	\$75	\$15	\$15	\$40
C	5 x 12 x 9-w cone	\$125	\$15	\$15	\$50
C	4 x 4, 10 x 10, x 8-w square	\$125	\$15	\$15	\$50
C	7 x 9 x 7-b cone	\$125	\$15	\$15	\$50
C	8 x 8 x 7-w drum	\$125	\$15	\$15	\$50
D	4 x 5, 7 x 13, 9-w rectangle	\$155	\$15	\$20	\$55
D	4 x 8, 5 x 9, 8-w rectangle	\$155	\$15	\$20	\$55
D	5 x 9, 8 x 12, 11-w rectangle	\$155	\$15	\$15	\$55
D	9 x 12 x 8-w cone	\$155	\$15	\$20	\$55
D	6 x 13 x 10-w cone	\$155	\$15	\$20	\$55
D	7 x 14 x 9-w cone	\$155	\$15	\$20	\$55
D	12 x 12 x 10 drum	\$155	\$15	\$20	\$55
E	7 x 7, 14 x 14, x 12-w square	\$225	\$15	\$25	\$60
E	15 x 15 x 10-w cube	\$225	\$15	\$25	\$60
<b>OTHER</b>					
Other shapes or sizes		call/email for quote			
No craquele' application		15% off Base Price			
A*		15% off Base Price with purchase of 4 or more of the same design			
<b>C.O.M. OPTIONS</b>					
Paint		\$25 per color			
Paint Strikeoff		\$25 per strikeoff			
Decorative Trim		if approved, no upcharge			
Soutache		call/email for quote and other available color choices			
<b>ACCESSORIES</b>					
Harp + Finial, all sizes		\$10			
Bulb Adaptor + Finial		\$10			
Change Fitting		\$10 for Uno, Euro, Chimney, Slotted Washer			
Increase 1/2" drop		\$3 per inch			

3/8" BRAIDED TRIM



Ivory  
Oat  
Wheat  
  
Gold  
Seagrass  
Paprika  
Black

1 1/2" BEADED TRIM

Black / Clear



BLACK VELVET TRIM



SOUTACHE



Metallic Gold  
Metallic Silver

Gold  
Silver  
Black

**NOTE:**

Actual samples can be ordered and rebated with first order ..... \$15.00

Full catalog binder and samples rebated with first order ..... \$25.00

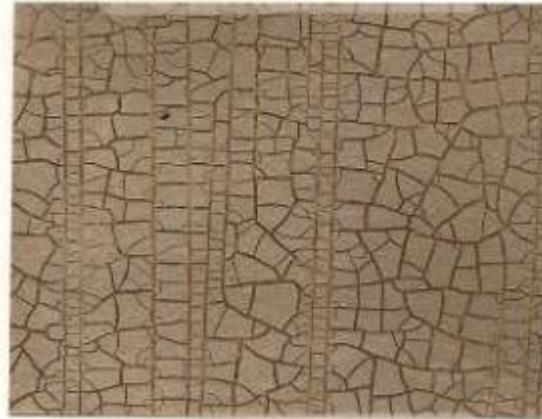
CRAQUELE' COLORS



Khaki-Bronze



Cool-Silver



Warm-Silver



Brass

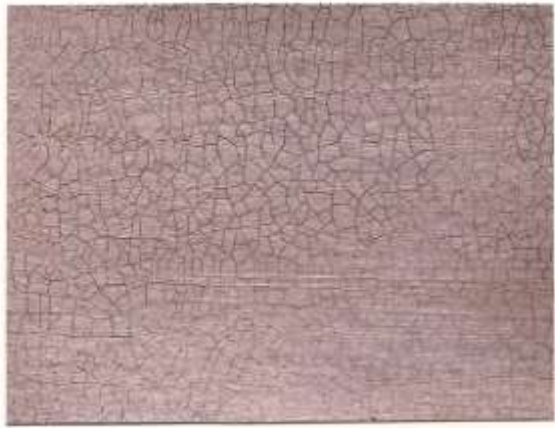


Gold

**NOTE:**

Actual samples can be ordered and rebated with first order ..... \$15.00

Full catalog binder and samples rebated with first order ..... \$25.00



Orchid



Lime



Aqua



Ivory



Black

**NOTE:**

Actual samples can be ordered and rebated with first order ..... \$15.00

Full catalog binder and samples rebated with first order ..... \$25.00

Ivory is available as an accent stripe(s) or chandelier only.